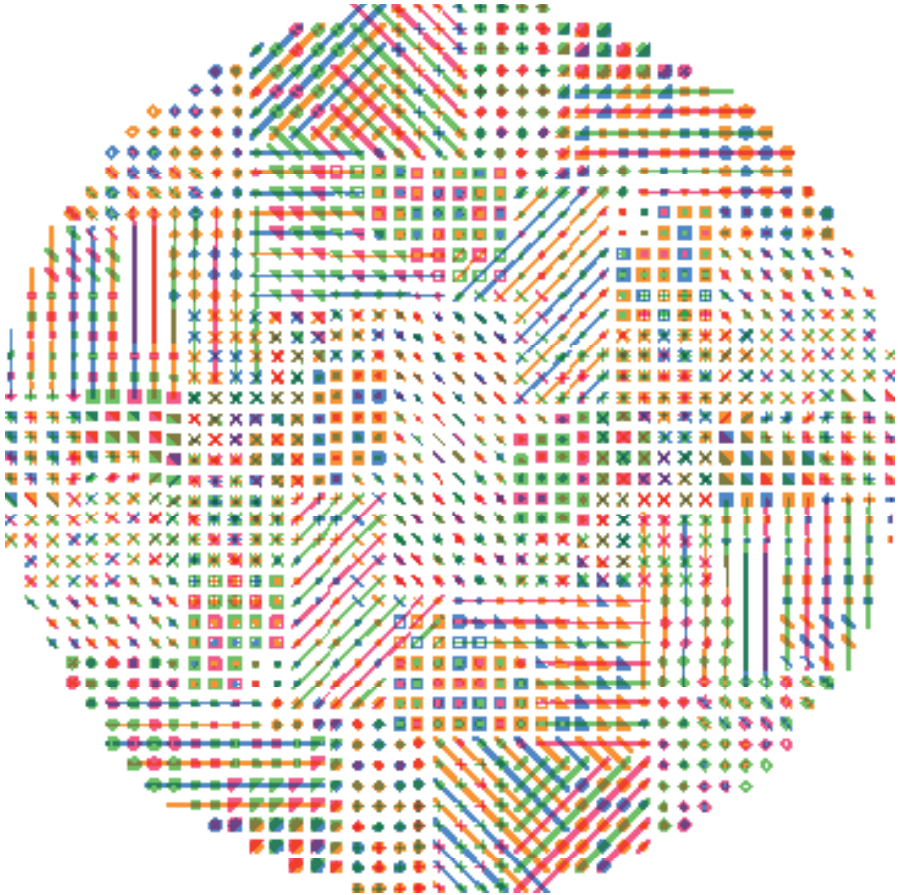


Whole  
Education  
Network



Network Booklet 2017-2018

# How can **W**hole **E**ducation help you?

---

**WE connect you** to a dynamic network of like-minded individuals, schools and MATs.

**WE introduce you** to national and international education experts.

**WE help you** to create impactful and meaningful partnerships.

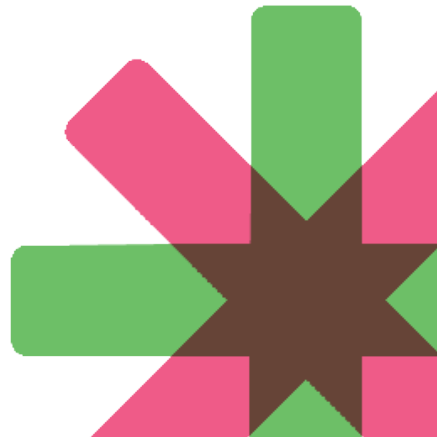
**WE provide you** with personalised support to identify your priorities and work with you to achieve them.

**WE support you** to create high quality, effective professional development for your teachers and staff.

# Contents

---

- + Introduction to Whole Education
- + National network of schools
- + Meet some Whole Education schools
- + Our offer
- + Membership benefits summary
- + Our Partners
- + Join us today



# Introduction to Whole Education

---



Whole Education is a dynamic partnership of schools and organisations committed to redefining today's educational offering. We believe that all children deserve an engaging and rounded education that supports academic achievement, but also develops the skills, knowledge and qualities needed to flourish in life, learning and work.

As a national network, Whole Education: facilitates shared-learning and collaboration between innovative schools; exposes teachers to world-class thinking and approaches; and supports effective professional development, enabling its member schools to move beyond delivering the national curriculum to building a stronger foundation for learning – a 'whole education'.

Our Mission:

- + To help children and young people to develop a range of skills, qualities and knowledge they will need to succeed and thrive in life, learning and work
- + To help make learning more relevant and engaging, with young people taking ownership of their own learning
- + To support learning across various settings (online, outside, at home, through volunteering and work) while engaging the wider community

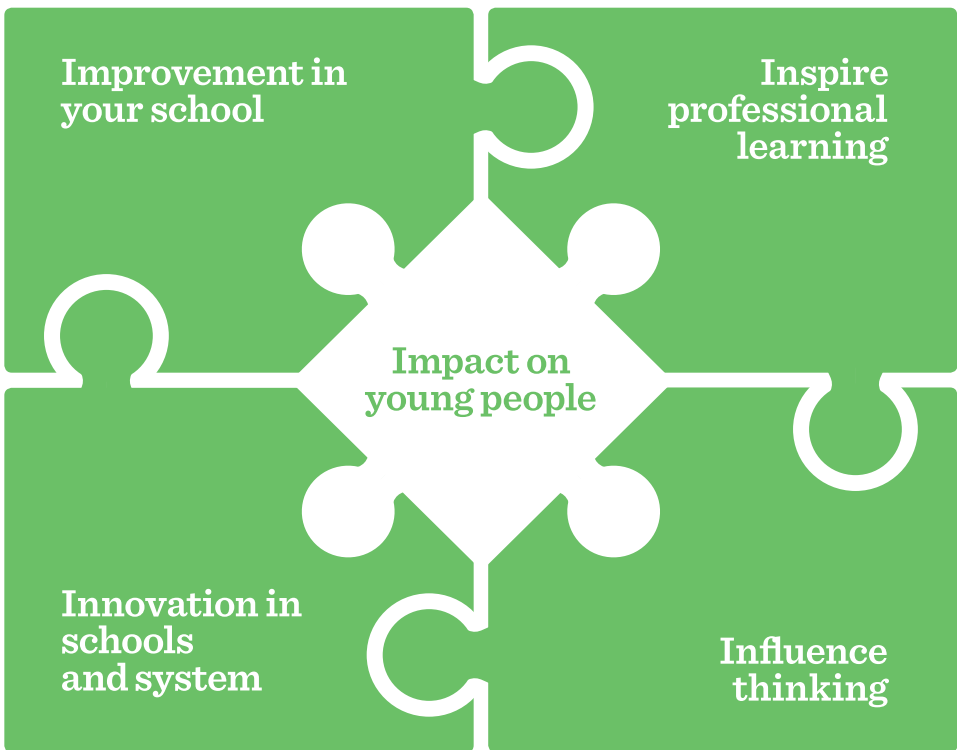
Please read further to understand what Whole Education could offer your school and how to join the network.

Sir John Dunford, Chair, Whole Education

# The Whole Education Network Model

---

The Whole Education network model is based on the concept of five 'I's. We use these criteria as a foundation for our tailored support for schools and to insure that the purpose and focus of our work is to impact the lives of young people. These criteria also enable us to look beyond the classroom and improve other important aspects of the school's ecosystem that influence young people, teachers and staff.



# Meet Some Whole Education Schools

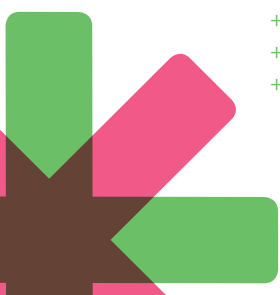
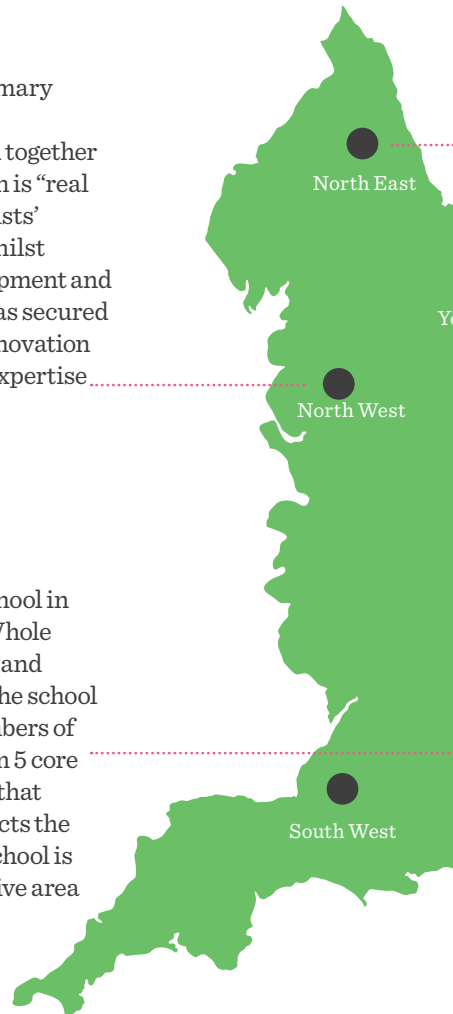
We work with over 300 schools across the country from individual primaries and secondaries, local multi-academy trusts and large groups of schools across a whole locality area, all leading the way in the provision of a 'Whole Education' for their young people.

**The Keys Federation** MAT is a partnership of four primary schools working together in Wigan. They serve different communities, remaining unique to their context but tied together by their core moral values - the "Spirit of Purpose" which is "real and all pervading". This approach has developed the Trusts' DREAM curriculum - unlocking potential and talent, whilst supporting high levels of well-being, professional development and academic success. The Trust's collaborative approach has secured specialist Music, Sport and Art Academies, as well as innovation for STEM and high school models in Primary. Areas of expertise include:

- + STEM strategies for engaging girls
- + Professional development of staff
- + Curriculum design and development

**Sandringham Primary School** is a four-form entry school in East London. The school shares the same values as the Whole Education network and is sincere in their offer of a broad and balanced curriculum that equips their learners for life. The school is unequivocally values-based in their offer, with all members of the school community recently deciding on Sandringham 5 core values. The school has created a topic-based curriculum that authentically and effectively combines subjects and reflects the needs and likes of the pupils and local community. The school is vibrant and every space within the school is an imaginative area for children to play and learn. Areas of expertise include:

- + Growth mindset
- + Oracy
- + Values led leadership





**Northfield School and Sports College** is a large, 11 to 16 mixed secondary school judged as 'Good' by Ofsted in all areas in July 2016. The school prides itself on offering a broad curriculum, including a culture of developing skills through a wide-ranging extra-curricular programme. Its sports specialism ensures that physical well-being and sporting excellence are a priority for both students and staff, whilst creativity, resilience, and self-expression are enhanced. As part of ensuring they are succeeding in providing an engaging and relevant education to their students, Northfield school has fully embraced a 'whole education' philosophy and has worked with the network through multiple platforms and projects. Areas of expertise include:

- + Spiral of Enquiry
- + Improving professional development through IRIS Film Club
- + Whole School Numeracy

**Cambridge Meridian Academies Trust (CMAT)** is a group of 6 secondary, 3 primary and 1 post-16 school that was formed in 2011. CMAT is well on the way to delivering their ambitious high quality education for all at the heart of its local communities of Cambridge and Peterborough. CMAT is committed to sharing excellent education practice throughout the Trust and all schools unite around the common purpose of sharing experiences and resources, improving standards and maximising their contribution to the wider community. A key strength of the MAT has been their determination that each school, while signing up to shared values and collaboration, is ultimately serving its local community. Staff within CMAT schools benefit from structured leadership development and training opportunities. Areas of expertise include:

- + Leadership development
- + Sharing across networks
- + Engaging local communities

Our Offer 2017/18

## Network Facilitators

---



One of the key benefits of being part of Whole Education's network is having a dedicated **school Network Facilitator**.

The network facilitator helps you make the most of our rich and dynamic network by:

- + Learning from you about your unique school or MAT priorities
- + Providing you with personalised support
- + Tailoring opportunities to your school or MAT
- + Brokering impactful partnerships with other Whole Education schools, relevant organisations and leading national and international education experts

They do so through an annual engagement visit or call, a yearly review of your experience of the network, and on-going communication throughout the year on a range of platforms, such as email, phone, events, project-related school visits and webinars.

Our **Network Facilitators** will act as tour guides, helping you to navigate and choose from the three distinct categories within our network offer:

- + Discover, Share and Collaborate
- + The Development and Innovation Hub Projects
- + School Improvement Programmes





## Our Offer 2017/18

# Discover, Share & Collaborate

---

We enable you to learn about innovative practice taking place in other Whole Education schools and MATs, to share your work and collaborate with peers.



### Interest Groups

Together with your school or MAT we identify 'interest areas' that you are focused on to deliver a 'Whole Education'. Based on which we help you choose the network's interest groups that would best suit you. These groups provide the framework for schools to engage with the network and to learn from each other and our partners. School representatives are supported to engage in Interest Groups through a mixture of virtual and face-to-face learning and peer support, to develop and improve their school's practice, as well as the professional learning of teachers and staff. These are our current groups:

- + Leadership, Culture and Change
- + Investing in Professional Capital
- + Whole Education Curriculum
- + Narrowing the Gap
- + Oracy, Speech and Language
- + Innovations in Maths and Numeracy
- + Innovations in Language Learning
- + Flipped and Self-Regulated Learning
- + Driving Digital Fluency
- + Project-Based Learning
- + Passport to Employment
- + Engaging in Social Action
- + Mental Health and Wellbeing
- + Engaging Parents and the Wider Community
- + Student Leadership and Agency
- + Broadening Access to a Cultural Education



### National Events

**Development and Innovation Workshop** - this event helps you harness the full potential of the Whole Education network by giving you the opportunity to learn more about our projects and programmes from a school's perspective.

**Annual Conference** - our hugely popular conference feature world-famous speakers, debates and breakout sessions. The conference inspires, motivates and challenges you to think on how to best provide a 'Whole Education'.

**Summer Conference** - our yearly summer conference is our platform to share, recognise and celebrate the best and most innovative practice from across the network.



### School-Based Events

School-based events provide an opportunity to look deeply into some of our most innovative schools and to connect with like-minded colleagues.



### Twilight Sharing Events

Twilight events offer the opportunity for teachers and staff from schools and MATs across a region to connect, share learning and develop lasting peer-support relationships on a local level.

## Our Offer 2017/18

# The Development and Innovation Hub

---

The Hub enables schools and MATs at the leading edge of practice to effectively pilot and test new approaches through collaborative projects and funded trials.



## Development and Innovation Hub Projects

**Flipped Learning Action Research Group**  
Flipped learning practitioners provide coaching for action research groups in other schools.

### Flipped Arts

Whole Education schools and MATs are exploring flipped learning in arts-based subjects in collaboration with local arts organisations.

### SAIL

Whole Education schools develop resources and pedagogy to encourage greater student agency in learning.

### IRIS Film Club

Following an EFF pilot, IRIS and Whole Education have developed 'Film Club' to enable teachers to talk about teaching with video clips, theory and discussion points as stimuli.

### Transferring to a 1-9 Curriculum - Science and Non-Core Subjects

This project supports middle leaders with the changing assessment framework by learning from each other, subject experts and heads of English and Maths.

### Whole-School Numeracy

Liaise with experts to prioritise numeracy across learning through a meaningful and sustainable approach.

### Click Connect Learn

MFL teachers are empowered to facilitate the learning of a range of languages by combining their knowledge of languages and pedagogy with online mentoring.

### British Exploring

Schools will support students to fundraise through a social action benefits scheme called 'Explorer Miles' towards a life-changing expedition.

### PASS Survey

GL Assessment has offered all Whole Education schools free access to their Pupil Attitudes to Self and School survey (usually £1/pupil).

### SBSQ

WE schools are trialling the Student Behavioural Styles Questionnaire to support students to harness their strengths to improve attainment.

### Youth Social Action

We train teams of students through the Learn to Lead methodology to make changes to their school and communities.

# Supporting School Improvement

We provide programmes to support the overall improvement in your school or MAT both on conventional indicators and ‘Whole Education’ aspects that you prioritise.



### Leadership Programmes

We are working hard to develop and sustain a generation of middle and senior leaders committed to providing a ‘Whole Education’. Our national programmes support CPD at team, department or faculty level, and focus on work-based study, face-to-face training days and wider reflection in order to boost confidence and truly make an impact on children and young people.

The leadership programmes we provide are:

- + Leadership, Culture and Change series
- + Leading and Managing Curriculum Change
- + Values-led Leadership for middle leaders

*Thoroughly enjoyed the programme. Developed me into a more well rounded professional leader*

Park View School



### Peer Review

Let us support your development and share your success story. We will facilitate a link with a qualified peer reviewer who will spend time at your school, review your progress in delivering a ‘Whole Education’ and celebrate positive change. Your peer reviewer will generate a report on the extent to which an entitlement of a ‘whole education’ is translated into the daily experiences of young people in your school, plus the next steps for your teachers, staff, governors and wider stakeholders.



### Narrow the Gap – for Good

Narrowing the gap is imperative for any school seeking to be good or outstanding, but many schools struggle to address the issue in a sustainable way. While complementing any existing work on the Pupil Premium, we will work to break the link between deprivation and poor outcomes by focusing on the importance of life skills, as well as knowledge. Schools involved in our Spirals of Enquiry programme will work with a team of international experts to explore how to narrow the gap for good.

# Free membership benefits summary

All of the below services are included free as part of Pathfinder school membership.

<b>School-Based Events</b>	Opportunity to get deeply inside how a school is providing a whole education	<ul style="list-style-type: none"> <li>+ Form lasting relationships with colleagues in member schools</li> <li>+ Take away an idea that will make a difference to your school</li> </ul>
<b>Twilight Sharing Events</b>	Opportunity to engage more staff in your school with Whole Education practice and peers	<ul style="list-style-type: none"> <li>+ Cost-effective, time efficient professional development</li> <li>+ Opportunity for staff across schools to develop lasting peer support relationships in a region</li> </ul>
<b>Webinars</b>	Online sharing of practice across the country in real-time	<ul style="list-style-type: none"> <li>+ Themed on various topics allowing staff to engage in professional learning without leaving the school</li> <li>+ Recorded, so can be viewed at any time via Youtube</li> </ul>
<b>Interest Groups</b>	Themed Interest Groups that help connect schools with shared areas of focus	<ul style="list-style-type: none"> <li>+ Includes series of events, webinars, online content and brokering service linked to 14 Whole Education Interest Groups</li> </ul>
<b>Development and Innovation workshop</b>	Day-long workshop and support to help Whole Education Champions develop themselves and their schools	<ul style="list-style-type: none"> <li>+ Event for 'Champions' in Pathfinder/Partner schools to learn from each other about how to deliver the 5 i's model in school</li> <li>+ Learn about all the opportunities available to you through the network</li> </ul>
<b>Development and Innovation Hub Projects</b>	Engage in funded innovative project pilots	<p>Examples include:</p> <ul style="list-style-type: none"> <li>+ Whole School Numeracy*</li> <li>+ IRIS Connect to improve feedback</li> <li>+ Youth Social Action*</li> </ul>
<b>Data Analysis and Benchmarking**</b>	Ensure you are fully data informed on how your school compares to other schools in the network*	<ul style="list-style-type: none"> <li>+ Enable you to compare and use data, and learn from schools in the Whole Education network</li> <li>+ Be provided with benchmarked data analysis</li> <li>+ Support to use data to inform curriculum planning and design</li> </ul>
<b>Summer Conference</b>	Recognise and celebrate outstanding practice by schools across the country	<ul style="list-style-type: none"> <li>+ Celebrates best and most innovative practice across the network, linked to Interest Groups</li> <li>+ Opportunity for leaders and staff at all levels to connect with each other's practice</li> </ul>

\*These projects have a subsidised cost. For the price check with your Network Facilitator

\*\* Will start only at the beginning of 2018

# Subsidised membership services 2017-18

Pathfinder schools also benefit from significant subsidies to a range of offers.

<b>Annual Conference</b>	Inspires, motivates and gives confidence to leaders by connecting with educational experts	<ul style="list-style-type: none"> <li>+ Leadership conference aimed at school and system leaders</li> <li>+ World class speakers</li> <li>+ Mix of keynotes, debates, school-led breakouts, table sessions</li> </ul>	<b>Pathfinder</b> 25% off for members 50% off early bird price
<b>Values-led Leadership</b>	Two separate programmes for primary and secondary to help develop and sustain a generation of middle leaders committed to a whole education	<ul style="list-style-type: none"> <li>+ Undertake an impact study in line with your school's improvement priorities, with support from a leadership coach</li> <li>+ Form lasting and supportive links with Whole Education leaders</li> <li>+ Engage with the latest national and international educational thinking and research</li> </ul>	<b>Pathfinder</b> 50% off** <i>Price for members: £600</i>
<b>Leadership, Culture and Change Series</b>	Series for headteachers and MAT CEOs to support the implementation of values-based vision into provision across your school or MAT	<ul style="list-style-type: none"> <li>+ Expert workshops from leaders in education and business</li> <li>+ School visits focused around the 'vision to provision' journey</li> <li>+ Designed to help participants develop professional capital</li> </ul>	<b>Pathfinder</b> 67% off <i>Price for members: £950</i>
<b>Leading and Managing Curriculum Change</b>	Supports senior leaders, to manage overall curriculum design, timetabling and curriculum development	<ul style="list-style-type: none"> <li>+ Undertake development work in your school with a tangible impact on students</li> <li>+ Confidence and real-life strategies to lead in a way that balances immediate needs and wider aspirations</li> <li>+ Experience peer support from colleagues in your MAT/region and coaching support</li> </ul>	<b>Pathfinder</b> Secondary - free place Primary (in development) - £600
<b>Peer Review</b>	Validate, affirm, support and challenge the development of WE practice in schools	<ul style="list-style-type: none"> <li>+ Proactive and forward-looking review</li> <li>+ Is both diagnostic and supports your school's development priorities</li> <li>+ Helps schools justify and have external validation of their impact and commitment to Whole Education to their staff, governors and wider stakeholders</li> </ul>	<b>Pathfinder</b> 50% off** <i>Price for members: £600</i>
<b>Narrowing the Gap Enquiry (Spirals of Enquiry)</b>	Powerful collaborative enquiry model to support school teams to narrow the gap in the medium and long term	<ul style="list-style-type: none"> <li>+ Support team of staff to deliver a whole school improvement project around narrowing the gap</li> <li>+ The Spirals of Enquiry model has been successfully used to narrow the gap in Canada</li> </ul>	<b>Pathfinder</b> 67% off <i>Price for members: £900</i>

\*\* *New secondary schools will benefit from a free Peer Review in their first year of membership.*

All benefits and costs above based on Pathfinder school membership at £2 per pupil. Other levels of membership include Network Membership at £1 per pupil and Partner Membership at £4 per pupil (by invitation).




## Our Offer 2017/18

# Our Partners

We work with partners who have diverse expertise related to our interest groups. Through our partners Whole Education schools have access to a range of free or discounted innovation and improvement projects

 <b>ASDAN</b>	+ <b>ASDAN</b> is an education charity and awarding organisation providing flexible and engaging programmes and qualifications that help young people develop skills for learning, work and life.
 <b>British Exploring Society</b>	+ <b>British Exploring Society</b> is a youth development charity that takes young people from 16-30 years old on jungle, desert and mountain expeditions to the world's most majestic wilderness.
 <b>CENTURY</b> INTELLIGENT LEARNING™	+ <b>CENTURY</b> is a cloud-based education platform. They harness artificial intelligence, big data technology and neuroscience to improve learning outcomes.
 <b>Coach in a Box</b> <small>Turning coaching on its head.</small>	+ <b>Coach in a Box</b> offers high quality coaching to educational leaders in areas such as leading change, influencing others and managing performance, building staff resilience and well-being.
 <b>Educate Together</b>	+ <b>Educate Together</b> is the patron body of a growing network of schools in Ireland. They run schools that guarantee equality of access and esteem to children and use a learner-centred approach to education.
 <b>ENGAGE</b> EDUCATION <small>Creators of idiy</small>	+ <b>Engage Education</b> is an award winning teacher recruitment agency that specialises in matching quality teachers and support staff with schools throughout the United Kingdom.
 <b>evolve</b>	+ <b>Evolve</b> is a social enterprise that is pioneering ways of improving life outcomes for our next generation with qualified Health Mentors and a range of innovative programmes.
 <b>helps children communicate</b> <small>REGISTERED CHARITY 210031</small>	+ <b>iCAN</b> is the children's communication charity, helping children develop the speech, language and communication skills they need to thrive in a 21st century world.
 <b>iris</b> <small>connect</small> <i>discuss. develop. share.</i>	+ <b>IRIS</b> is a highly effective and versatile online behaviour and rewards solution for secondary schools, giving detailed, in-depth analysis of the data collected to school managers.

	<p>+ <b>Lyfta</b> is an online platform where teachers can find engaging, immersive storyworlds to capture the hearts and minds of their students, allowing them to delve into complex topics.</p>
	<p>+ <b>Maslaha</b> creates new ways of tackling long-standing issues affecting Muslim communities, aiming to improve services, change attitudes and challenge systems of inequality.</p>
	<p>+ <b>The Mercers' Company</b> and its associated charitable trusts, makes substantial grants to support education, general welfare, church and faith, and arts and heritage.</p>
	<p>+ <b>The Mighty Creatives</b> are a charity working across the East Midlands that believes that access to play, creativity and culture is vital, significantly affecting how young people do at school, their health, their life chances.</p>
	<p>+ <b>National Citizen Service</b> is a UK Government voluntary personal and social development programme for 15–17 year olds in England and Northern Ireland.</p>
	<p>+ <b>OCR</b> is a leading UK awarding body. They provide qualifications which engage people of all ages and abilities at school, college, in work or through part-time learning programmes.</p>
	<p>+ <b>The Outward Bound Trust</b> is an educational charity that uses the outdoors to help develop young people from all walks of life, equipping them with valuable skills for education, work and life.</p>
	<p>+ <b>Place2Be</b> is the UK's leading children's mental health charity providing in-school support and expert training to improve the emotional wellbeing of pupils, families, teachers and staff.</p>
	<p>+ <b>PYE</b>'s mission is to unleash the power, purpose, and potential of young people worldwide. They empower teachers, youth workers, and other leaders to build supportive Creative Communities that change lives.</p>
	<p>+ <b>realsmart</b> provides schools with a website that brings Google Apps for Education and the school's online learning and tracking tools all to one place.</p>
	<p>+ <b>Relational Schools</b> aim is to build relational capital and capability in the lives of students, teachers, families and communities by supporting positive and evidence-based change.</p>
	<p>+ <b>Roots of Empathy</b> is an evidence-based classroom program that has shown significant effect in reducing levels of aggression and bullying, raising social/emotional competence and increasing empathy.</p>

	<p>+ <b>School-Home Support (SHS)</b> provide personalised support to children and families, tackling the underlying barriers to a successful education to improve the life chances of children.</p>
	<p>+ <b>University of the First Age (UFA)</b> aim to develop in a young person leadership characteristics that can dramatically improve their life chances.</p>
	<p>+ <b>Unifrog</b> partner with schools, providing a one-stop-shop where students can explore their interests, then find and successfully apply for their best next step after school.</p>

If you want to find out more about our partner organisations and how your school can benefit from their work contact [info@wholeeducation](mailto:info@wholeeducation)

## Join us today

---

If you want to discuss your school's priorities relating to professional learning, innovation and improvement, or have any questions about the Whole Education Network, email Douglas Archibald at [info@wholeeducation.org](mailto:info@wholeeducation.org) or call +44 (0) 207 250 8053.

**Come and make a difference.**